

EIKONHA®

Cross-Linked Injectable Hyaluronic Acid

EIKONHA®

Cross-Linked Injectable Hyaluronic Acid



ARCHITECTURAL
RESHAPING OF
BODY



AK Pharma Inc
9100 S Dadeland, 1500-MBP, #150006
Miami, Florida 33156, USA.
www.eikonha.com



ARCHITECTURAL
RESHAPING OF BODY

EIKONHA®

Cross-Linked Injectable Hyaluronic Acid

What is Eikonha?

Eikonha is next generation cross linked hyaluronic acid based dermal filler designed for architectural reshaping of body, based on Enhanced Interlinked 3D Matrix [EIM] technology which allows easy to inject, natural looking and long-lasting effect.

Gel Characteristics

Concentration	20 mg/ml
Volume	10 ml and 20 ml
Particle	0.5–1.25 mm
Duration	12–18 months

Safety Parameters: Eikonha

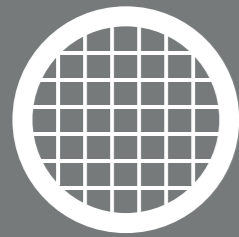
<0.25 UI/ml Low Endotoxin Level	<2 µg/gm Non-Detectable BDDE Residual Content	<6 µg/ml Low Protein Load
Endotoxin Level	BDDE	Protein Load



EIKONHA®

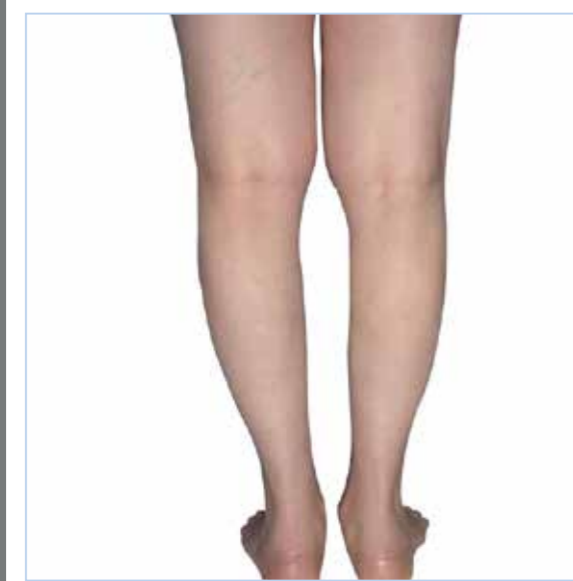
Cross-Linked Injectable Hyaluronic Acid

Share your Before and After Pictures with
Eikonha at info@eikonha.com
and grab a chance to win **surprise gift**

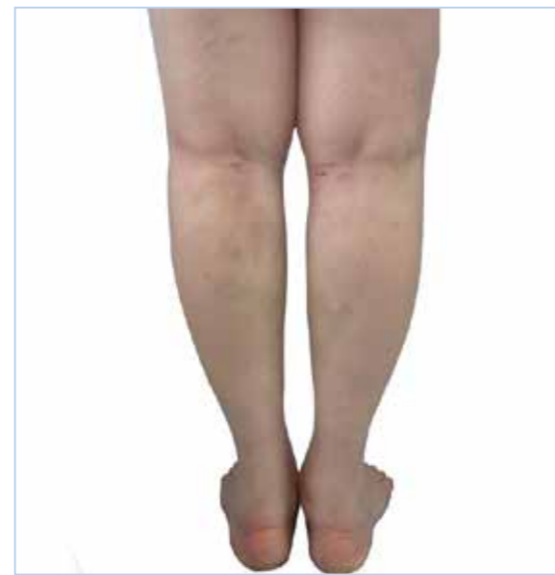


Before and After

Indication: Calves Augmentation

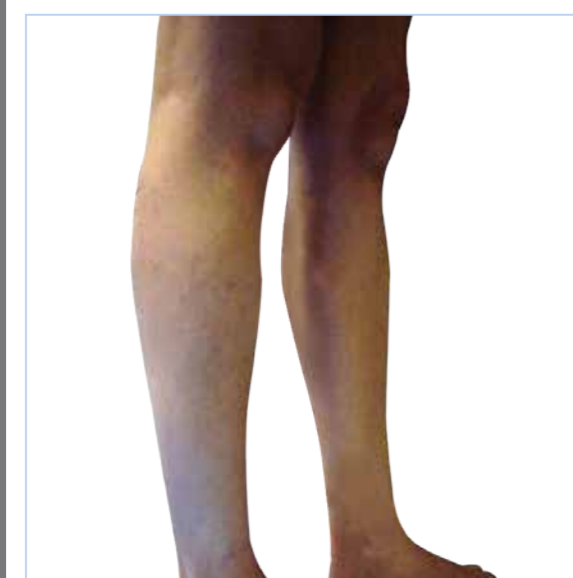


BEFORE



AFTER

Indication: Calves Augmentation



BEFORE

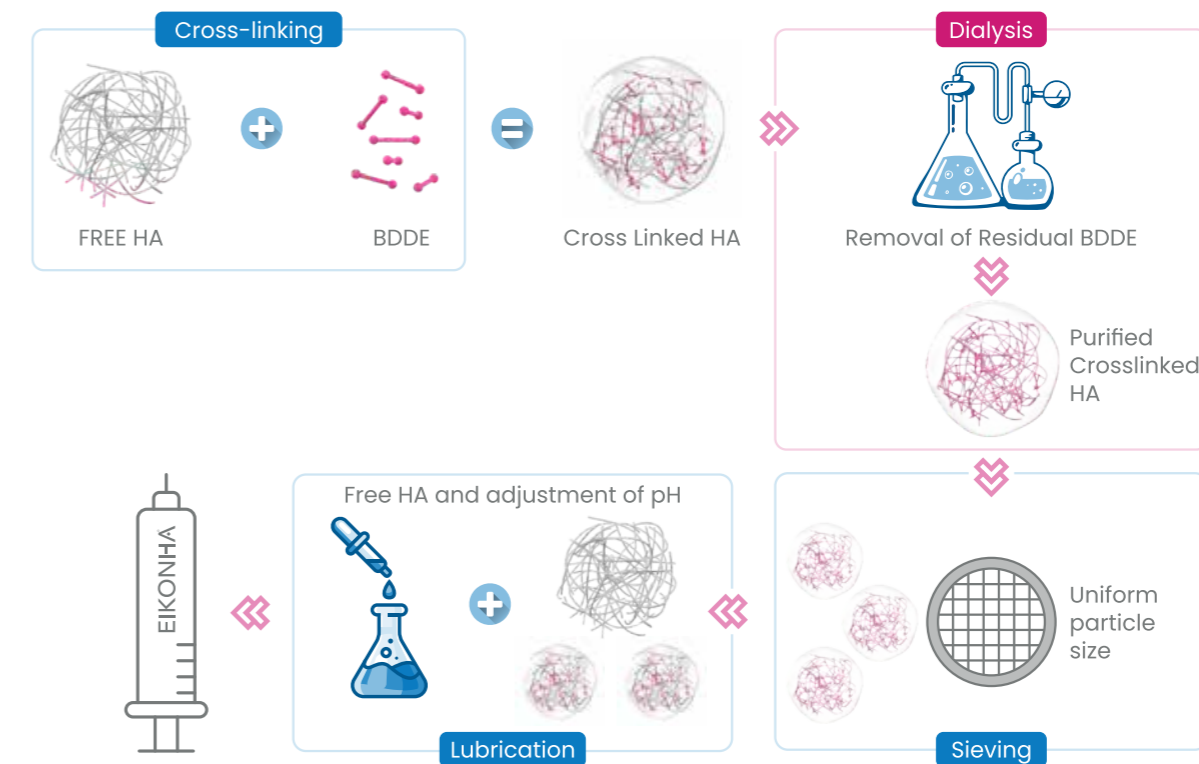


AFTER

Before and After Pictures: Courtesy by Dr.Francisco De Melo, Consultant Plastic Surgeon

EIM Technology

Enhanced Interlinked 3D Matrix [EIM] technology is a start of art manufacturing technique which provides high covalent bond among HA molecules in a polysaccharide chain.



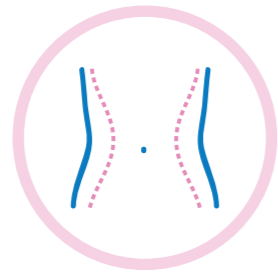
Benefits of EIM Technology

- 3-D hydrophilic matrix network**
 - Allows Nutrition, oxygen and hormones to go through freely, and protect regular physiological functions of the tissue.
- Promising rheological properties**
 - Increased surface area • Good cohesivity of gel
- Higher stability against natural degradation by hyaluronidase**

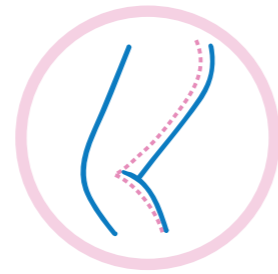
Indications



Buttock shaping



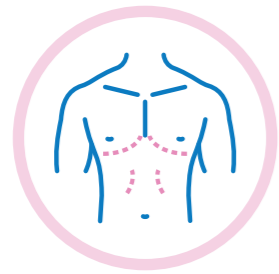
Concavities caused by liposuction



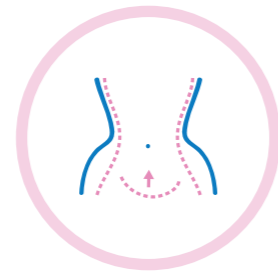
Calves



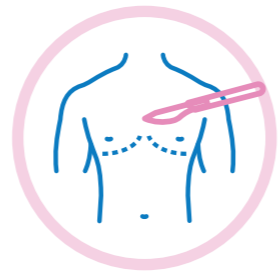
Reconstruction



Male chest shaping



Body depressions



Trauma/Surgical scars

Volume Guidelines

Indications	Suggested Volume for Injection
Calves Contouring	ⓧ 20-150 mL
Buttock Shaping	ⓧ 250-350 mL
Penile Enlargement	ⓧ For Penile girth: 18-20 mL, For Glans Penis: 2-3 mL
Depressions after Liposuction	ⓧ 16-23 mL **Depends on area to be injected

Before and After

Indication: Buttock Shaping



BEFORE



AFTER



Scan here to view treatment technique using Eikonha by Dr. Francisco De Melo, Consultant Plastic Surgeon



Indication: Buttock Shaping



BEFORE



AFTER



ARCHITECTURAL RESHAPING OF BODY